

Thread Key and Chart Information

You will need:

DMC thread in the colours specified below, or your own selection from threads you already have.

Needle:

Aida (14 count) or Evenweave (28 count) white fabric.

Key and measurements for landscape orientation:

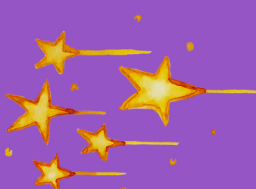
Number	Name	Strands	Stitches
♦ DMC 996	Electric Blue medium	2	627
♦ DMC 798	Deft Blue dark	2	494
♦ DMC 602	Cranberry medium	2	174
♦ DMC 718	Plum	2	95
♦ DMC 911	Emerald Green medium	2	159
♦ DMC 726	Topaz light	2	161
♦ DMC 321	Christmas Red	2	38
♦ DMC 553	Violet	2	155
♦ DMC BLANC	White	2	453
♦ DMC 722	Orange Spice light	2	38
♦ DMC 938	Coffee Brown ultra dk	2	bs only

14 ct 57x42 Stitches (10.3 x 7.6 cm) (4.1 x 3.0 in.)

Key and measurements for portrait orientation:

Number	Name	Strands	Stitches
♦ DMC 996	Electric Blue medium	2	627
♦ DMC 798	Deft Blue dark	2	578
♦ DMC 602	Cranberry medium	2	174
♦ DMC 718	Plum	2	95
♦ DMC 911	Emerald Green medium	2	159
♦ DMC 726	Topaz light	2	161
♦ DMC 321	Christmas Red	2	38
♦ DMC 553	Violet	2	155
♦ DMC BLANC	White	2	453
♦ DMC 722	Orange Spice light	2	38
♦ DMC 938	Coffee Brown ultra dk	2	bs only

14 ct 42x59 Stitches (7.6 x 10.7 cm) (3.0 x 4.2 in.)



Celebrating 2022 'Snazzy'

Cross Stitch Chart



